

thermaline
ProThermetic T
Range overview



Thinking of you
Electrolux

therma*line*

A new era in professional cooking



Electrolux Professional
a Swiss production
for over 100 years



ProThermetic Tilting units are available in different body height configurations:

- ◆ **H=700** (body height 700mm Hygienic)
- ◆ **H=800** (body height 800mm)
- ◆ **H=400** (body height 400mm for cantilever/wall mounted type installations)

Units can be installed on:

- ◆ **Feet** (feet can be covered with optional closing stainless steel covering plinths)
- ◆ **Stainless steel plinths** (100mm or 200mm height depending on body height)
- ◆ **On site Concrete** or stainless steel plinths
- ◆ **Wall/cantilever** configurations (for 400mm body height units)

Note:

- ◆ **Steam Condensation** is standard in all Pressure Braising Pans/ Pressure Skillets

Index

Boiling Pans / Kettles

Electric - 60 lt	6
Electric - 60 lt	6
Electric - 100 and 150 lt	6
Electric - 200 and 300 lt	7
Electric - 400 and 500 lt	7
Electric + Stirrer - 60 lt	7
Electric + Stirrer - 100 and 150 lt	8
Electric + Stirrer - 200 and 300 lt	8
Electric + Stirrer - 400 and 500 lt	8
Gas - 60 and 100 lt	9
Gas - 150 and 300 lt	9
Gas - 400 and 500 lt	9
Steam - 60 lt	10
Steam - 100 lt	10
Steam - 150 lt	10
Steam - 200 lt	11
Steam - 300 lt	11
Steam - 400 lt	11
Steam - 500 lt	12
Steam + Stirrer - 60 and 100 lt	12
Steam + Stirrer - 150 lt	12
Steam + Stirrer - 200 and 300 lt	13
Steam + Stirrer - 400 and 500 lt	13

Chilltherm

Electric	14
Steam	14

Braising Pans / Skillets

Electric - 60 lt - 800 mm Depth	15
Electric - 60 lt - 850 mm Depth	15
Electric - 60 lt - 900 mm Depth	15
Electric - 90 lt - 800 mm Depth	16
Electric - 90 lt - 850 mm Depth	16
Electric - 90 lt - 900 mm Depth	16
Electric - 100 lt - 800 mm Depth	17
Electric - 100 lt - 850 mm Depth	17

Electric - 100 Lt - 900 mm Depth	17
Electric - 170 Lt - 900 mm Depth	18
Gas - 60 Lt - 900 mm Depth	19
Gas - 90 Lt - 900 mm Depth	19
Gas - 100 Lt - 900 mm Depth	20
Gas - 170 Lt - 900 mm Depth	20

Pressure Braising Pans / Pressure Skillets

Electric - 60 Lt - 800 mm Depth	21
Electric - 60 Lt - 850 mm Depth	21
Electric - 60 Lt - 900 mm Depth	21
Electric - 90 Lt - 800 mm Depth	22
Electric - 90 Lt - 850 mm Depth	22
Electric - 90 Lt - 900 mm Depth	22
Electric - 100 Lt - 800 mm Depth	23
Electric - 100 Lt - 850 mm Depth	23
Electric - 100 Lt - 900 mm Depth	23
Electric - 170 Lt - 800 mm Depth	24
Electric - 170 Lt - 850 mm Depth	24
Electric - 170 Lt - 900 mm Depth	24
Gas - 90 Lt - 900 mm Depth	25
Gas - 170 Lt - 900 mm Depth	25

Electric Boiling Pans - 60 lt



	586000 PBOT06EAE0	586001 PBOT06EEEE0	586002 PBOT06ETE0	586122 PBOT06EBE0	586123 PBOT06EUJ0
External dim. - mm					
width	1100	1100	1100	1100	1100
depth	800	800	800	850	850
height without plinth	700	800	400	700	400
overall height (lid open)	1658	1658	1658	1658	1658
overall depth	908	908	908	908	908
Well capacity - lt	60	60	60	60	60
Electric Power - kW	12.2	12.2	12.2	12.2	12.2
Electrical connection	400V 3N 50/60Hz	400V 3N 50/60Hz	400V 3N 50/60Hz	400V 3N 50/60Hz	400V 3N 50/60Hz
Hygienic plinth	•			•	
Wall Mounted			•		•

Electric Boiling Pans - 60 lt



	586003 PBOT06ECE0	586004 PBOT06EGE0	586005 PBOT06EVE0
External dim. - mm			
width	1100	1100	1100
depth	900	900	900
height without plinth	700	800	400
overall height (lid open)	1756	1756	1756
overall depth	1008	1008	1008
Well capacity - lt	60	60	60
Electric Power - kW	12.2	12.2	12.2
Electrical connection	400V 3N 50/60Hz	400V 3N 50/60Hz	400V 3N 50/60Hz
Hygienic plinth	•		
Wall Mounted			•

Electric Boiling Pans - 100 and 150 lt



	586006 PBOT10ECE0	586007 PBOT10EGE0	586008 PBOT10EVE0	586009 PBOT15ECE0	586010 PBOT15EGE0	586011 PBOT15EVE0
External dim. - mm						
width	1200	1200	1200	1300	1300	1300
depth	900	900	900	900	900	900
height without plinth	700	800	400	700	800	400
overall height (lid open)	1756	1756	1756	1845	1845	1845
overall depth	1060	1060	1060	1090	1090	1090
Well capacity - lt	100	100	100	150	150	150
Electric Power - kW	18.2	18.2	18.2	24.2	24.2	24.2
Electrical connection	400V 3N 50/60Hz	400V 3N 50/60Hz	400V 3N 50/60Hz	400V 3N 50/60Hz	400V 3N 50/60Hz	400V 3N 50/60Hz
Hygienic plinth	•			•		
Wall Mounted			•			•

Electric Boiling Pans - 200 and 300 lt



	586012 PBOT20EDEO	586013 PBOT20EHEO	586014 PBOT20EWEO	586015 PBOT30EDEO	586016 PBOT30EHEO	586017 PBOT30EWEO
External dim. - mm						
width	1400	1400	1400	1500	1500	1500
depth	1000	1000	1000	1000	1000	1000
height without plinth	700	800	400	700	800	400
overall height (lid open)	2047	2047	2047	2069	2069	2069
overall depth	1234	1234	1234	1278	1278	1278
Well capacity - lt	200	200	200	300	300	300
Electric Power - kW	30.2	30.2	30.2	30.2	30.2	30.2
Electrical connection	400V 3N 50/60Hz	400V 3N 50/60Hz	400V 3N 50/60Hz	400V 3N 50/60Hz	400V 3N 50/60Hz	400V 3N 50/60Hz
Hygienic plinth	•			•		
Wall Mounted			•			•

Electric Boiling Pans - 400 and 500 lt



	586018 PBOT40EDEO	586019 PBOT40EHEO	586020 PBOT50EDEO	586021 PBOT50EHEO
External dim. - mm				
width	1500	1500	1500	1500
depth	1000	1000	1000	1000
height without plinth	700	800	700	800
overall height (lid open)	2214	2214	2374	2374
overall depth	1278	1278	1278	1278
Well capacity - lt	400	400	500	500
Electric Power - kW	48.2	48.2	48.2	48.2
Electrical connection	400V 3N 50/60Hz	400V 3N 50/60Hz	400V 3N 50/60Hz	400V 3N 50/60Hz
Hygienic plinth	•		•	

Electric Boiling Pans + Stirrer - 60 lt



	586022 PBOT06RCEO	586023 PBOT06RGE0	586024 PBOT06RVE0
External dim. - mm			
width	1100	1100	1100
depth	900	900	900
height without plinth	700	800	400
overall height (lid open)	1756	1756	1756
overall depth	1008	1008	1008
Well capacity - lt	60	60	60
Electric Power - kW	12.5	12.5	12.5
Electrical connection	400V 3N 50/60Hz	400V 3N 50/60Hz	400V 3N 50/60Hz
Hygienic plinth	•		
Wall Mounted			•

Electric Boiling Pans + Stirrer - 100 and 150 lt



	586025 PBOT10RCEO	586026 PBOT10RCEO	586027 PBOT10RVEO	586028 PBOT15RCEO	586029 PBOT15RCEO	586030 PBOT15RVEO
External dim. - mm						
width	1200	1200	1200	1300	1300	1300
depth	900	900	900	900	900	900
height without plinth	700	800	400	700	800	400
overall height (lid open)	1756	1756	1756	1845	1845	1845
overall depth	1060	1060	1060	1090	1090	1090
Well capacity - lt	100	100	100	150	150	150
Electric Power - kW	18.5	18.5	18.5	24.6	24.6	24.6
Electrical connection	400V 3N 50/60Hz	400V 3N 50/60Hz	400V 3N 50/60Hz	400V 3N 50/60Hz	400V 3N 50/60Hz	400V 3N 50/60Hz
Hygienic plinth	•			•		
Wall Mounted			•			•

Electric Boiling Pans + Stirrer - 200 and 300 lt



	586031 PBOT20RDEO	586032 PBOT20RHEO	586033 PBOT20RHEO	586034 PBOT30RDEO	586035 PBOT30RHEO	586036 PBOT30RHEO
External dim. - mm						
width	1400	1400	1400	1500	1500	1500
depth	1000	1000	1000	1000	1000	1000
height without plinth	700	800	400	700	800	400
overall height (lid open)	2047	2047	2047	2069	2069	2069
overall depth	1234	1234	1234	1278	1278	1278
Well capacity - lt	200	200	200	300	300	300
Electric Power - kW	30.6	30.6	30.6	36.6	36.6	36.6
Electrical connection	400V 3N 50/60Hz	400V 3N 50/60Hz	400V 3N 50/60Hz	400V 3N 50/60Hz	400V 3N 50/60Hz	400V 3N 50/60Hz
Hygienic plinth	•			•		
Wall Mounted			•			•

Electric Boiling Pans + Stirrer - 400 and 500 lt



	586037 PBOT40RDEO	586038 PBOT40RHEO	586039 PBOT50RDEO	586040 PBOT50RHEO
External dim. - mm				
width	1500	1500	1500	1500
depth	1000	1000	1000	1000
height without plinth	700	800	700	800
overall height (lid open)	2214	2214	2374	2374
overall depth	1278	1278	1278	1278
Well capacity - lt	400	400	500	500
Electric Power - kW	48.6	48.6	48.6	48.6
Electrical connection	400V 3N 50/60Hz	400V 3N 50/60Hz	400V 3N 50/60Hz	400V 3N 50/60Hz
Hygienic plinth	•		•	

Gas Boiling Pans - 60 and 100 lt



	586106 PBOT06GCCO	586107 PBOT06GGCO	586108 PBOT06GVCO	586109 PBOT10GCCO	586110 PBOT10GGCO	586111 PBOT10GVCO
External dim. - mm						
width	1100	1100	1100	1200	1200	1200
depth	900	900	900	900	900	900
height without plinth	700	800	400	700	800	400
overall height (lid open)	1756	1756	1756	1756	1756	1756
overall depth	1008	1008	1008	1060	1060	1060
Well capacity - lt	60	60	60	100	100	100
Gas Power - kW	15	15	15	21	21	21
Electric Power - kW	0.25	0.25	0.25	0.25	0.25	0.25
Electrical connection	230V 1N 50/60Hz	230V 1N 50/60Hz	230V 1N 50/60Hz	230V 1N 50/60Hz	230V 1N 50/60Hz	230V 1N 50/60Hz
Hygienic plinth	•			•		
Wall Mounted			•			•

Gas Boiling Pans - 150 and 300 lt



	586112 PBOT15GDCCO	586113 PBOT15GHCO	586114 PBOT15GWCO	586115 PBOT30GDCCO	586116 PBOT30GHCO	586117 PBOT30GWCO
External dim. - mm						
width	1300	1300	1300	1500	1500	1500
depth	1000	1000	1000	1000	1000	1000
height without plinth	700	800	400	700	800	400
overall height (lid open)	1845	1845	1845	2069	2069	2069
overall depth	1090	1090	1090	1278	1278	1278
Well capacity - lt	150	150	150	300	300	300
Gas Power - kW	27	27	27	45	45	45
Electric Power - kW	0.25	0.25	0.25	0.25	0.25	0.25
Electrical connection	230V 1N 50/60Hz	230V 1N 50/60Hz	230V 1N 50/60Hz	230V 1N 50/60Hz	230V 1N 50/60Hz	230V 1N 50/60Hz
Hygienic plinth	•			•		
Wall Mounted			•			•

Gas Boiling Pans - 400 and 500 lt



	586118 PBOT40GDCCO	586119 PBOT40GHCO	586120 PBOT50GDCCO	586121 PBOT50GHCO
External dim. - mm				
width	1500	1500	1500	1500
depth	1000	1000	1000	1000
height without plinth	700	800	700	800
overall height (lid open)	2214	2214	2374	2374
overall depth	1278	1278	1278	1278
Well capacity - lt	400	400	500	500
Gas Power - kW	45	45	45	45
Electric Power - kW	0.25	0.25	0.25	0.25
Electrical connection	230V 1N 50/60Hz	230V 1N 50/60Hz	230V 1N 50/60Hz	230V 1N 50/60Hz
Hygienic plinth	•		•	

Steam Boiling Pans - 60 lt



	586045 PBOT06SCCO	586046 PBOT06SGCO	586047 PBOT06SVCO	586048 PBOT06TCCO	586049 PBOT06TGCO	586050 PBOT06TVCO
External dim. - mm						
width	1100	1100	1100	1100	1100	1100
depth	900	900	900	900	900	900
height without plinth	700	800	400	700	800	400
overall height (lid open)	1756	1756	1756	1756	1756	1756
overall depth	1008	1008	1008	1008	1008	1008
Well capacity - lt	60	60	60	60	60	60
Steam consumption - kg/h	34	34	34	34	34	34
Electric Power - kW	0.25	0.25	0.25	0.25	0.25	0.25
Electrical connection	230V 1N 50/60Hz	230V 1N 50/60Hz	230V 1N 50/60Hz	230V 1N 50/60Hz	230V 1N 50/60Hz	230V 1N 50/60Hz
Manual tilting				•	•	•
Hygienic plinth	•			•		
Wall Mounted			•			•

Steam Boiling Pans - 100 lt



	586051 PBOT10SCCO	586052 PBOT10SGCO	586053 PBOT10SVCO	586054 PBOT10TCCO	586055 PBOT10TGCO	586056 PBOT10TVCO
External dim. - mm						
width	1200	1200	1200	1200	1200	1200
depth	900	900	900	900	900	900
height without plinth	700	800	400	700	800	400
overall height (lid open)	1756	1756	1756	1756	1756	1756
overall depth	1060	1060	1060	1060	1060	1060
Well capacity - lt	100	100	100	100	100	100
Steam consumption - kg/h	46	46	46	46	46	46
Electric Power - kW	0.25	0.25	0.25	0.25	0.25	0.25
Electrical connection	230V 1N 50/60Hz	230V 1N 50/60Hz	230V 1N 50/60Hz	230V 1N 50/60Hz	230V 1N 50/60Hz	230V 1N 50/60Hz
Manual tilting				•	•	•
Hygienic plinth	•			•		
Wall Mounted			•			•

Steam Boiling Pans - 150 lt



	586057 PBOT15SCCO	586058 PBOT15SGCO	586059 PBOT15SVCO	586060 PBOT15TCCO	586061 PBOT15TGCO	586062 PBOT15TVCO
External dim. - mm						
width	1300	1300	1300	1300	1300	1300
depth	900	900	900	900	900	900
height without plinth	700	800	400	700	800	400
overall height (lid open)	1845	1845	1845	1845	1845	1845
overall depth	1090	1090	1090	1090	1090	1090
Well capacity - lt	150	150	150	150	150	150
Steam consumption - kg/h	63	63	63	63	63	63
Electric Power - kW	0.25	0.25	0.25	0.25	0.25	0.25
Electrical connection	230V 1N 50/60Hz	230V 1N 50/60Hz	230V 1N 50/60Hz	230V 1N 50/60Hz	230V 1N 50/60Hz	230V 1N 50/60Hz
Manual tilting				•	•	•
Hygienic plinth	•			•		
Wall Mounted			•			•

Steam Boiling Pans - 200 lt



	586063 PBOT20SDCO	586064 PBOT20SHCO	586065 PBOT20SWCO	586066 PBOT20TDCO	586067 PBOT20THCO	586068 PBOT20TWCO
External dim. - mm						
width	1400	1400	1400	1400	1400	1400
depth	1000	1000	1000	1000	1000	1000
height without plinth	700	800	400	700	800	400
overall height (lid open)	2047	2047	2047	2047	2047	2047
overall depth	1234	1234	1234	1234	1234	1234
Well capacity - lt	200	200	200	200	200	200
Steam consumption - kg/h	78	78	78	78	78	78
Electric Power - kW	0.25	0.25	0.25	0.25	0.25	0.25
Electrical connection	230V 1N 50/60Hz	230V 1N 50/60Hz	230V 1N 50/60Hz	230V 1N 50/60Hz	230V 1N 50/60Hz	230V 1N 50/60Hz
Manual tilting				•	•	•
Hygienic plinth	•			•		
Wall Mounted			•			•

Steam Boiling Pans - 300 lt



	586069 PBOT30SDCO	586070 PBOT30SHCO	586071 PBOT30SWCO	586072 PBOT30TDCO	586073 PBOT30THCO	586074 PBOT30TWCO
External dim. - mm						
width	1500	1500	1500	1500	1500	1500
depth	1000	1000	1000	1000	1000	1000
height without plinth	700	800	400	700	800	400
overall height (lid open)	2069	2069	2069	2069	2069	2069
overall depth	1278	1278	1278	1278	1278	1278
Well capacity - lt	300	300	300	300	300	300
Steam consumption - kg/h	101	101	101	101	101	101
Electric Power - kW	0.25	0.25	0.25	0.25	0.25	0.25
Electrical connection	230V 1N 50/60Hz	230V 1N 50/60Hz	230V 1N 50/60Hz	230V 1N 50/60Hz	230V 1N 50/60Hz	230V 1N 50/60Hz
Manual tilting				•	•	•
Hygienic plinth	•			•		
Wall Mounted			•			•

Steam Boiling Pans - 400 lt



	586075 PBOT40SDCO	586076 PBOT40SHCO	586077 PBOT40TDCO	586078 PBOT40THCO
External dim. - mm				
width	1500	1500	1500	1500
depth	1000	1000	1000	1000
height without plinth	700	800	700	800
overall height (lid open)	2214	2214	2214	2214
overall depth	1278	1278	1278	1278
Well capacity - lt	400	400	400	400
Steam consumption - kg/h	118	118	118	118
Electric Power - kW	0.25	0.25	0.25	0.25
Electrical connection	230V 1N 50/60Hz	230V 1N 50/60Hz	230V 1N 50/60Hz	230V 1N 50/60Hz
Manual tilting			•	•
Hygienic plinth	•		•	

Steam Boiling Pans - 500 lt



	586079 PBOT50SDCO	586080 PBOT50SHCO	586081 PBOT50TDCO	586082 PBOT50THCO
External dim. - mm				
width	1500	1500	1500	1500
depth	1000	1000	1000	1000
height without plinth	700	800	700	800
overall height (lid open)	2374	2374	2374	2374
overall depth	1278	1278	1278	1278
Well capacity - lt	500	500	500	500
Steam consumption - kg/h	118	118	118	118
Electric Power - kW	0.57	0.57	0.25	0.25
Electrical connection	230V 1N 50/60Hz	230V 1N 50/60Hz	230V 1N 50/60Hz	230V 1N 50/60Hz
Manual tilting			•	•
Hygienic plinth	•		•	

Steam Boiling Pan + Stirrer - 60 and 100 lt



	586083 PBOT06QCEO	586084 PBOT06QCEO	586085 PBOT06QVEO	586086 PBOT10QCEO	586087 PBOT10QCEO	586088 PBOT10QVEO
External dim. - mm						
width	1100	1100	1100	1200	1200	1200
depth	900	900	900	900	900	900
height without plinth	700	800	400	700	800	400
overall height (lid open)	1756	1756	1756	1756	1756	1756
overall depth	1008	1008	1008	1008	1008	1008
Well capacity - lt	60	60	60	100	100	100
Steam consumption - kg/h	34	34	34	46	46	46
Electric Power - kW	0.45	0.45	0.45	0.45	0.45	0.45
Electrical connection	400V 3N 50/60Hz	400V 3N 50/60Hz	400V 3N 50/60Hz	400V 3N 50/60Hz	400V 3N 50/60Hz	400V 3N 50/60Hz
Hygienic plinth	•				•	
Wall Mounted			•			•

Steam Boiling Pan + Stirrer - 150 lt



	586089 PBOT15QCEO	586090 PBOT15QCEO	586091 PBOT15QVEO
External dim. - mm			
width	1300	1300	1300
depth	900	900	900
height without plinth	700	800	400
overall height (lid open)	1845	1845	1845
overall depth	1090	1090	1090
Well capacity - lt	150	150	150
Steam consumption - kg/h	63	63	63
Electric Power - kW	0.45	0.45	0.45
Electrical connection	400V 3N 50/60Hz	400V 3N 50/60Hz	400V 3N 50/60Hz
Hygienic plinth	•		
Wall Mounted			•

Steam Boiling Pan + Stirrer - 200 and 300 lt



	586092 PBOT20QDEO	586093 PBOT20QHEO	586094 PBOT20QWEO	586095 PBOT30QDEO	586096 PBOT30QHEO	586097 PBOT30QWEO
External dim. - mm						
width	1400	1400	1400	1500	1500	1500
depth	1000	1000	1000	1000	1000	1000
height without plinth	700	800	400	700	800	400
overall height (lid open)	2047	2047	2047	2069	2069	2069
overall depth	1234	1234	1234	1278	1278	1278
Well capacity - lt	200	200	200	300	300	300
Steam consumption - kg/h	78	78	78	101	101	101
Electric Power - kW	0.57	0.57	0.57	0.57	0.57	0.57
Electrical connection	400V 3N 50/60Hz	400V 3N 50/60Hz	400V 3N 50/60Hz	400V 3N 50/60Hz	400V 3N 50/60Hz	400V 3N 50/60Hz
Hygienic plinth	•			•		
Wall mounted			•			•

Steam Boiling Pan + Stirrer - 400 and 500 lt



	586098 PBOT40QDEO	586099 PBOT40QHEO	586100 PBOT50QDEO	586101 PBOT50QHEO
External dim. - mm				
width	1500	1500	1500	1500
depth	1000	1000	1000	1000
height without plinth	700	800	700	800
overall height (lid open)	2214	2214	2374	2374
overall depth	1278	1278	1278	1278
Well capacity - lt	400	400	500	500
Steam consumption - kg/h	118	118	118	118
Electric Power - kW	0.57	0.57	0.82	0.82
Electrical connection	400V 3N 50/60Hz	400V 3N 50/60Hz	400V 3N 50/60Hz	400V 3N 50/60Hz
Hygienic plinth	•		•	

Electric Chilltherm



	599297 FUAEOWOOZ	599298 JUAJOEWOOZ	599299 JUAKOEWOOZ
External dim. - mm			
width	1200	1400	1500
depth	900	1000	1000
height without plinth	800	800	800
Well capacity - lt	100	200	300
Electric Power - kW	18.5	30.57	36.6
Electrical connection	400V 3N 50/60Hz	400V 3N 50/60Hz	400V 3N 50/60Hz

Steam Chilltherm



	5993000 FUJEOEWOOZ	599301 JUJJOEWOOZ	599302 JUJKOEWOOZ
External dim. - mm			
width	1200	1400	1500
depth	900	1000	1000
height without plinth	800	800	800
Well capacity - lt	100	200	300
Steam consumption - kg/h	46	78	101
Electric Power - kW	0.2	0.2	0.2
Electrical connection	400V 3N 50/60Hz	400V 3N 50/60Hz	400V 3N 50/60Hz

Electric Braising Pans - 60 lt - 800 mm Depth



	586124 PFET06EAE0	586125 PFET06EEE0	586126 PFET06ETE0	586127 PFET06MAE0	586128 PFET06MEE0	586129 PFET06MTE0
External dim. - mm						
width	1200	1200	1200	1200	1200	1200
depth	800	800	800	800	800	800
height without plinth	700	800	400	700	800	400
overall height (lid open)	1748	1748	1748	1748	1748	1748
overall depth	820	820	820	820	820	820
Well capacity - lt	60	60	60	60	60	60
Well depth - mm	220	220	220	220	220	220
Electric Power - kW	12.2	12.2	12.2	12.2	12.2	12.2
Electrical connection	400V 3N 50/60Hz	400V 3N 50/60Hz	400V 3N 50/60Hz	400V 3N 50/60Hz		
Compound	•	•	•			
Mild steel				•	•	•
Hygienic plinth	•			•		
Wall mounted			•			•
GN conformity	•	•	•	•	•	•

Electric Braising Pans - 60 lt - 850 mm Depth



	586190 PFET06EBE0	586191 PFET06EUE0	586192 PFET06MBE0	586193 PFET06MUE0
External dim. - mm				
width	1200	1200	1200	1200
depth	850	850	850	850
height without plinth	700	400	700	400
overall height (lid open)	1748	1748	1748	1748
overall depth	850	850	850	850
Well capacity - lt	60	60	60	60
Well depth - mm	220	220	220	220
Electric Power - kW	12.2	12.2	12.2	12.2
Electrical connection	400V 3N 50/60Hz	400V 3N 50/60Hz	400V 3N 50/60Hz	400V 3N 50/60Hz
Compound	•	•		
Mild steel			•	•
Hygienic plinth	•		•	
Wall mounted		•		•
GN conformity	•	•	•	•

Electric Braising Pans - 60 lt - 900 mm Depth



	586142 PFET06ECE0	586143 PFET06EGE0	586144 PFET06EVE0	586145 PFET06MCE0	586146 PFET06MGE0	586147 PFET06MVE0
External dim. - mm						
width	1200	1200	1200	1200	1200	1200
depth	900	900	900	900	900	900
height without plinth	700	800	400	700	800	400
overall height (lid open)	1845	1845	1845	1845	1845	1845
overall depth	920	920	920	920	920	920
Well capacity - lt	60	60	60	60	60	60
Well depth - mm	220	220	220	220	220	220
Electric Power - kW	12.2	12.2	12.2	12.2	12.2	12.2
Electrical connection	400V 3N 50/60Hz	400V 3N 50/60Hz	400V 3N 50/60Hz	400V 3N 50/60Hz	400V 3N 50/60Hz	400V 3N 50/60Hz
Compound	•	•	•			
Mild steel				•	•	•
Hygienic plinth	•			•		
Wall mounted			•			•
GN conformity	•	•	•	•	•	•

Electric Braising Pans - 90 lt - 800 mm Depth



	586130 PFET09EAE0	586131 PFET09EEEE0	586132 PFET09ETEO	586133 PFET09MAEO	586134 PFET09MEE0	586135 PFET09MTE0
External dim. - mm						
width	1200	1200	1200	1200	1200	1200
depth	800	800	800	800	800	800
height without plinth	700	800	400	700	800	400
overall height (lid open)	1748	1748	1748	1748	1748	1748
overall depth	820	820	820	820	820	820
Well capacity - lt	90	90	90	90	90	90
Well depth - mm	290	290	290	290	290	290
Electric Power - kW	15.2	15.2	15.2	15.2	15.2	15.2
Electrical connection	400V 3N 50/60Hz	400V 3N 50/60Hz	400V 3N 50/60Hz	400V 3N 50/60Hz	400V 3N 50/60Hz	400V 3N 50/60Hz
Compound	•	•	•			
Mild steel				•	•	•
Hygienic plinth	•			•		
Wall mounted			•			•
GN conformity	•	•	•	•	•	•

Electric Braising Pans - 90 lt - 850 mm Depth



	586194 PFET09EBEO	586195 PFET09EUEO	586196 PFET09MBEO	586197 PFET09MUEO
External dim. - mm				
width	1200	1200	1200	1200
depth	850	850	850	850
height without plinth	700	400	700	400
overall height (lid open)	1748	1748	1748	1748
overall depth	850	850	850	850
Well capacity - lt	90	90	90	90
Well depth - mm	290	290	290	290
Electric Power - kW	15.2	15.2	15.2	15.2
Electrical connection	400V 3N 50/60Hz	400V 3N 50/60Hz	400V 3N 50/60Hz	400V 3N 50/60Hz
Compound	•	•		
Mild steel			•	•
Hygienic plinth	•		•	
Wall mounted		•		•
GN conformity	•	•	•	•

Electric Braising Pans - 90 lt - 900 mm Depth



	586148 PFET09ECE0	586149 PFET09EGEO	586150 PFET09EVEO	586151 PFET09MCEO	586152 PFET09MGEO	586153 PFET09MVEO
External dim. - mm						
width	1200	1200	1200	1200	1200	1200
depth	900	900	900	900	900	900
height without plinth	700	800	400	700	800	400
overall height (lid open)	1845	1845	1845	1845	1845	1845
overall depth	920	920	920	920	920	920
Well capacity - lt	90	90	90	90	90	90
Well depth - mm	290	290	290	290	290	290
Electric Power - kW	15.2	15.2	15.2	15.2	15.2	15.2
Electrical connection	400V 3N 50/60Hz	400V 3N 50/60Hz	400V 3N 50/60Hz	400V 3N 50/60Hz	400V 3N 50/60Hz	400V 3N 50/60Hz
Compound	•	•	•			
Mild steel				•	•	•
Hygienic plinth	•			•		
Wall mounted			•			•
GN conformity	•	•	•	•	•	•

Electric Braising Pans - 100 lt - 800 mm Depth



	586136 PFET10EAE0	586137 PFET10EEE0	586138 PFET10ETE0	586139 PFET10MAE0	586140 PFET10MEE0	586141 PFET10MTE0
External dim. - mm						
width	1600	1600	1600	1600	1600	1600
depth	800	800	800	800	800	800
height without plinth	700	800	400	700	800	400
overall height (lid open)	1748	1748	1748	1748	1748	1748
overall depth	820	820	820	820	820	820
Well capacity - lt	100	100	100	100	100	100
Well depth - mm	220	220	220	220	220	220
Electric Power - kW	18.2	18.2	18.2	18.2	18.2	18.2
Electrical connection	400V 3N 50/60Hz	400V 3N 50/60Hz	400V 3N 50/60Hz	400V 3N 50/60Hz	400V 3N 50/60Hz	400V 3N 50/60Hz
Compound	•	•	•			
Mild steel				•	•	•
Hygienic plinth	•			•		
Wall mounted			•			•
GN conformity	•	•	•	•	•	•

Electric Braising Pans - 100 lt - 850 mm Depth



	586198 PFET10EBE0	586199 PFET10EUE0	586200 PFET10MBE0	586201 PFET10MUE0
External dim. - mm				
width	1600	1600	1600	1600
depth	850	850	850	850
height without plinth	700	400	700	400
overall height (lid open)	1748	1748	1748	1748
overall depth	850	850	850	850
Well capacity - lt	100	100	100	100
Well depth - mm	220	220	220	220
Electric Power - kW	18.2	18.2	18.2	18.2
Electrical connection	400V 3N 50/60Hz	400V 3N 50/60Hz	400V 3N 50/60Hz	400V 3N 50/60Hz
Compound	•	•		
Mild steel			•	•
Hygienic plinth	•		•	
Wall mounted		•		•
GN conformity	•	•	•	•

Electric Braising Pans - 100 lt - 900 mm Depth



	586154 PFET10ECE0	586155 PFET10EGE0	586156 PFET10EVE0	586157 PFET10MCE0	586158 PFET10MGE0	586159 PFET10MVE0
External dim. - mm						
width	1600	1600	1600	1600	1600	1600
depth	900	900	900	900	900	900
height without plinth	700	800	400	700	800	400
overall height (lid open)	1845	1845	1845	1845	1845	1845
overall depth	920	920	920	920	920	920
Well capacity - lt	100	100	100	100	100	100
Well depth - mm	220	220	220	220	220	220
Electric Power - kW	18.2	18.2	18.2	18.2	18.2	18.2
Electrical connection	400V 3N 50/60Hz	400V 3N 50/60Hz	400V 3N 50/60Hz	400V 3N 50/60Hz	400V 3N 50/60Hz	400V 3N 50/60Hz
Compound	•	•	•			
Mild steel				•	•	•
Hygienic plinth	•			•		
Wall mounted			•			•
GN conformity	•	•	•	•	•	•

Electric Braising Pans - 170 lt - 900 mm Depth



	586160 PFET17ECE0	586161 PFET17EVE0	586162 PFET17EGEO	586163 PFET17MCEO	586164 PFET17MGEO	586165 PFET17MVEO
External dim. - mm						
width	1600	1600	1600	1600	1600	1600
depth	900	900	900	900	900	900
height without plinth	700	800	400	700	800	400
overall height (lid open)	1845	1845	1845	1845	1845	1845
overall depth	920	920	920	920	920	920
Well capacity - lt	170	170	170	170	170	170
Well depth - mm	340	340	340	340	340	340
Electric Power - kW	20.6	20.6	20.6	20.6	20.6	20.6
Electrical connection	400V 3N 50/60Hz	400V 3N 50/60Hz	400V 3N 50/60Hz	400V 3N 50/60Hz	400V 3N 50/60Hz	400V 3N 50/60Hz
Compound	•	•	•			
Mild steel				•	•	•
Hygienic plinth	•			•		
Wall mounted			•			•
GN conformity	•	•	•	•	•	•

Gas Braising Pans - 60 lt - 900 mm Depth



	586166 PFET06GCCO	586167 PFET06GGCO	586168 PFET06GVCO	586169 PFET06NCCO	586170 PFET06NGCO	586171 PFET06NVCO
External dim. - mm						
width	1200	1200	1200	1200	1200	1200
depth	900	900	900	900	900	900
height without plinth	700	800	400	700	800	400
overall height (lid open)	1865	1865	1865	1865	1865	1865
overall depth	971	971	971	971	971	971
Well capacity - lt	60	60	60	60	60	60
Well depth - mm	220	220	220	220	220	220
Gas power - kW	16	16	16	16	16	16
Electric Power - kW	0.25	0.25	0.25	0.25	0.25	0.25
Electrical connection	230V 1N 50/60Hz	230V 1N 50/60Hz	230V 1N 50/60Hz	230V 1N 50/60Hz	230V 1N 50/60Hz	230V 1N 50/60Hz
Compound	•	•	•			
Mild steel				•	•	•
Hygienic plinth	•			•		
Wall mounted			•			•
GN conformity	•	•	•	•	•	•

Gas Braising Pans - 90 lt - 900 mm Depth



	586172 PFET09GCCO	586173 PFET09GGCO	586174 PFET09GVCO	586175 PFET09NCCO	586176 PFET09NGCO	586177 PFET09NVCO
External dim. - mm						
width	1200	1200	1200	1200	1200	1200
depth	900	900	900	900	900	900
height without plinth	700	800	400	700	800	400
overall height (lid open)	1865	1865	1865	1865	1865	1865
overall depth	971	971	971	971	971	971
Well capacity - lt	90	90	90	90	90	90
Well depth - mm	290	290	290	290	290	290
Gas power - kW	20	20	20	20	20	20
Electric Power - kW	0.25	0.25	0.25	0.25	0.25	0.25
Electrical connection	230V 1N 50/60Hz	230V 1N 50/60Hz	230V 1N 50/60Hz	230V 1N 50/60Hz	230V 1N 50/60Hz	230V 1N 50/60Hz
Compound	•	•	•			
Mild steel				•	•	•
Hygienic plinth	•			•		
Wall mounted			•			•
GN conformity	•	•	•	•	•	•

Gas Braising Pans - 100 lt - 900 mm Depth



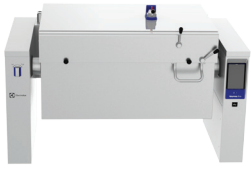
	586178 PFET10NCCO	586179 PFET10NGCO	586180 PFET10NVCO	586181 PFET10GCCO	586182 PFET10GGCO	586183 PFET10GVCO
External dim. - mm						
width	1600	1600	1600	1600	1600	1600
depth	900	900	900	900	900	900
height without plinth	700	800	400	700	800	400
overall height (lid open)	1865	1865	1865	1865	1865	1865
overall depth	971	971	971	971	971	971
Well capacity - lt	100	100	100	100	100	100
Well depth - mm	220	220	220	220	220	220
Gas power - kW	26	26	26	26	26	26
Electric Power - kW	0.25	0.25	0.25	0.25	0.25	0.25
Electrical connection	230V 1N 50/60Hz	230V 1N 50/60Hz	230V 1N 50/60Hz	230V 1N 50/60Hz	230V 1N 50/60Hz	230V 1N 50/60Hz
Compound	•	•	•			
Mild steel				•	•	•
Hygienic plinth	•			•		
Wall mounted			•			•
GN conformity	•	•	•	•	•	•

Gas Braising Pans - 170 lt - 900 mm Depth



	586184 PFET17NCCO	586185 PFET17NGCO	586186 PFET17NVCO	586187 PFET17GCCO	586188 PFET17GGCO	586189 PFET17GVCO
External dim. - mm						
width	1600	1600	1600	1600	1600	1600
depth	900	900	900	900	900	900
height without plinth	700	800	400	700	800	400
overall height (lid open)	1875	1875	1875	1875	1875	1875
overall depth	971	971	971	971	971	971
Well capacity - lt	170	170	170	170	170	170
Well depth - mm	340	340	340	340	340	340
Gas power - kW	26	26	26	26	26	26
Electric Power - kW	0.25	0.25	0.25	0.25	0.25	0.25
Electrical connection	230V 1N 50/60Hz	230V 1N 50/60Hz	230V 1N 50/60Hz	230V 1N 50/60Hz	230V 1N 50/60Hz	230V 1N 50/60Hz
Compound	•	•	•			
Mild steel				•	•	•
Hygienic plinth	•			•		
Wall mounted			•			•
GN conformity	•	•	•	•	•	•

Electric Pressure Braising Pans - 60 lt - 800 mm Depth



	586202 PUET06EAE0	586203 PUET06EEE0	586204 PUET06ETE0	586205 PUET06KAE0	586206 PUET06KEE0	586207 PUET06KTE0
External dim. - mm						
width	1200	1200	1200	1200	1200	1200
depth	800	800	800	800	800	800
height without plinth	700	800	400	700	800	400
overall height (lid open)	1791	1791	1791	1791	1791	1791
overall depth	936	936	936	936	936	936
Well capacity - lt	60	60	60	60	60	60
Well depth - mm	228	228	228	228	228	228
Electric Power - kW	15.5	15.5	15.5	15.5	15.5	15.5
Electrical connection	400V 3N 50/60Hz	400V 3N 50/60Hz	400V 3N 50/60Hz	400V 3N 50/60Hz	400V 3N 50/60Hz	400V 3N 50/60Hz
Core temperature sensor				•	•	•
Hygienic plinth	•			•		
Wall mounted			•			•
GN conformity	•	•	•	•	•	•

Electric Pressure Braising Pans - 60 lt - 850 mm Depth




	586262 PUET06EBE0	586263 PUET06EUE0	586264 PUET06KBE0	586265 PUET06KUE0
External dim. - mm				
width	1200	1200	1200	1200
depth	850	850	850	850
height without plinth	700	400	700	400
overall height (lid open)	1791	1791	1791	1791
overall depth	936	936	936	936
Well capacity - lt	60	60	60	60
Well depth - mm	228	228	228	228
Electric Power - kW	15.5	15.5	15.5	15.5
Electrical connection	400V 3N 50/60Hz	400V 3N 50/60Hz	400V 3N 50/60Hz	400V 3N 50/60Hz
Core temperature sensor			•	•
Hygienic plinth	•		•	
Wall mounted		•		•
GN conformity	•	•	•	•

Electric Pressure Braising Pans - 60 lt - 900 mm Depth




	586226 PUET06ECE0	586227 PUET06EGE0	586228 PUET06EVE0	586229 PUET06KCE0	586230 PUET06KGE0	586231 PUET06KVE0
External dim. - mm						
width	1200	1200	1200	1200	1200	1200
depth	900	900	900	900	900	900
height without plinth	700	800	400	700	800	400
overall height (lid open)	1791	1791	1791	1791	1791	1791
overall depth	952	952	952	952	952	952
Well capacity - lt	60	60	60	60	60	60
Well depth - mm	228	228	228	228	228	228
Electric Power - kW	15.5	15.5	15.5	15.5	15.5	15.5
Electrical connection	400V 3N 50/60Hz	400V 3N 50/60Hz	400V 3N 50/60Hz	400V 3N 50/60Hz	400V 3N 50/60Hz	400V 3N 50/60Hz
Core temperature sensor				•	•	•
Hygienic plinth	•			•		
Wall mounted			•			•
GN conformity	•	•	•	•	•	•

Electric Pressure Braising Pans - 90 lt - 800 mm Depth




	586208 PUET09EAE0	586209 PUET09EEEO	586210 PUET09ETEO	586211 PUET09KAE0	586212 PUET09KEEO	586213 PUET09KTE0
External dim. - mm						
width	1200	1200	1200	1200	1200	1200
depth	800	800	800	800	800	800
height without plinth	700	800	400	700	800	400
overall height (lid open)	1791	1791	1791	1791	1791	1791
overall depth	936	936	936	936	936	936
Well capacity - lt	90	90	90	90	90	90
Well depth - mm	298	298	298	298	298	298
Electric Power - kW	15.5	15.5	15.5	15.5	15.5	15.5
Electrical connection	400V 3N 50/60Hz	400V 3N 50/60Hz	400V 3N 50/60Hz	400V 3N 50/60Hz	400V 3N 50/60Hz	400V 3N 50/60Hz
Core temperature sensor				•	•	•
Hygienic plinth	•			•		
Wall mounted			•			•
GN conformity	•	•	•	•	•	•

Electric Pressure Braising Pans - 90 lt - 850 mm Depth



	586266 PUET09EBEO	586267 PUET09EUEO	586268 PUET09KBEO	586269 PUET09KUEO
External dim. - mm				
width	1200	1200	1200	1200
depth	850	850	850	850
height without plinth	700	400	700	400
overall height (lid open)	1791	1791	1791	1791
overall depth	936	936	936	936
Well capacity - lt	90	90	90	90
Well depth - mm	298	298	298	298
Electric Power - kW	15.5	15.5	15.5	15.5
Electrical connection	400V 3N 50/60Hz	400V 3N 50/60Hz	400V 3N 50/60Hz	400V 3N 50/60Hz
Core temperature sensor			•	•
Hygienic plinth	•		•	
Wall mounted		•		•
GN conformity	•	•	•	•

Electric Pressure Braising Pans - 90 lt - 900 mm Depth



	586232 PUET09ECE0	586233 PUET09EGEO	586234 PUET09EVE0	586235 PUET09KCEO	586236 PUET09KGEO	586237 PUET09KVE0
External dim. - mm						
width	1200	1200	1200	1200	1200	1200
depth	900	900	900	900	900	900
height without plinth	700	800	400	700	800	400
overall height (lid open)	1791	1791	1791	1791	1791	1791
overall depth	952	952	952	952	952	952
Well capacity - lt	90	90	90	90	90	90
Well depth - mm	298	298	298	298	298	298
Electric Power - kW	15.5	15.5	15.5	15.5	15.5	15.5
Electrical connection	400V 3N 50/60Hz	400V 3N 50/60Hz	400V 3N 50/60Hz	400V 3N 50/60Hz	400V 3N 50/60Hz	400V 3N 50/60Hz
Core temperature sensor				•	•	•
Hygienic plinth	•			•		
Wall mounted			•			•
GN conformity	•	•	•	•	•	•

Electric Pressure Braising Pans - 100 lt - 800 mm Depth



	586214 PUET10EAE0	586215 PUET10EEEE0	586216 PUET10ETE0	586217 PUET10KAE0	586218 PUET10KEE0	586219 PUET10KTE0
External dim. - mm						
width	1600	1600	1600	1600	1600	1600
depth	800	800	800	800	800	800
height without plinth	700	800	400	700	800	400
overall height (lid open)	1791	1791	1791	1791	1791	1791
overall depth	934	934	934	934	934	934
Well capacity - lt	100	100	100	100	100	100
Well depth - mm	228	228	228	228	228	228
Electric Power - kW	20.6	20.6	20.6	20.6	20.6	20.6
Electrical connection	400V 3N 50/60Hz	400V 3N 50/60Hz	400V 3N 50/60Hz	400V 3N 50/60Hz	400V 3N 50/60Hz	400V 3N 50/60Hz
Core temperature sensor				•	•	•
Hygienic plinth	•			•		
Wall mounted			•			•
GN conformity	•	•	•	•	•	•

Electric Pressure Braising Pans - 100 lt - 850 mm Depth



	586270 PUET10EBE0	586271 PUET10EUE0	586272 PUET10KBE0	586273 PUET10KUE0
External dim. - mm				
width	1600	1600	1600	1600
depth	850	850	850	850
height without plinth	700	400	700	400
overall height (lid open)	1791	1791	1791	1791
overall depth	934	934	934	934
Well capacity - lt	100	100	100	100
Well depth - mm	228	228	228	228
Electric Power - kW	20.6	20.6	20.6	20.6
Electrical connection	400V 3N 50/60Hz	400V 3N 50/60Hz	400V 3N 50/60Hz	400V 3N 50/60Hz
Core temperature sensor			•	•
Hygienic plinth	•		•	
Wall mounted		•		•
GN conformity	•	•	•	•

Electric Pressure Braising Pans - 100 lt - 900 mm Depth



	586238 PUET10ECE0	586239 PUET10EGE0	586240 PUET10EVE0	586241 PUET10KCE0	586242 PUET10KGE0	586243 PUET10KVE0
External dim. - mm						
width	1600	1600	1600	1600	1600	1600
depth	900	900	900	900	900	900
height without plinth	700	800	400	700	800	400
overall height (lid open)	1791	1791	1791	1791	1791	1791
overall depth	950	950	950	950	950	950
Well capacity - lt	100	100	100	100	100	100
Well depth - mm	228	228	228	228	228	228
Electric Power - kW	20.6	20.6	20.6	20.6	20.6	20.6
Electrical connection	400V 3N 50/60Hz	400V 3N 50/60Hz	400V 3N 50/60Hz	400V 3N 50/60Hz	400V 3N 50/60Hz	400V 3N 50/60Hz
Core temperature sensor				•	•	•
Hygienic plinth	•			•		
Wall mounted			•			•
GN conformity	•	•	•	•	•	•

Electric Pressure Braising Pans - 170 lt - 800 mm Depth



	586220 PUET17EAE0	586221 PUET17EEE0	586222 PUET17ETE0	586223 PUET17KAEO	586224 PUET17KEEO	586225 PUET17KTE0
External dim. - mm						
width	1600	1600	1600	1600	1600	1600
depth	800	800	800	800	800	800
height without plinth	700	800	400	700	800	400
overall height (lid open)	1791	1791	1791	1791	1791	1791
overall depth	934	934	934	934	934	934
Well capacity - lt	170	170	170	170	170	170
Well depth - mm	326	326	326	326	326	326
Electric Power - kW	20.6	20.6	20.6	20.6	20.6	20.6
Electrical connection	400V 3N 50/60Hz	400V 3N 50/60Hz	400V 3N 50/60Hz	400V 3N 50/60Hz	400V 3N 50/60Hz	400V 3N 50/60Hz
Core temperature sensor				•	•	•
Hygienic plinth	•			•		
Wall mounted			•			•
GN conformity	•	•	•	•	•	•

Electric Pressure Braising Pans - 170 lt - 850 mm Depth



	586274 PUET17EBEO	586275 PUET17EUEO	586276 PUET17KBEO	586277 PUET17KUEO
External dim. - mm				
width	1600	1600	1600	1600
depth	850	850	850	850
height without plinth	700	400	700	400
overall height (lid open)	1791	1791	1791	1791
overall depth	934	934	934	934
Well capacity - lt	170	170	170	170
Well depth - mm	326	326	326	326
Electric Power - kW	20.6	20.6	20.6	20.6
Electrical connection	400V 3N 50/60Hz	400V 3N 50/60Hz	400V 3N 50/60Hz	400V 3N 50/60Hz
Core temperature sensor			•	•
Hygienic plinth	•		•	
Wall mounted		•		•
GN conformity	•	•	•	•

Electric Pressure Braising Pans - 170 lt - 900 mm Depth



	586244 PUET17ECE0	586245 PUET17EGEO	586246 PUET17EVE0	586247 PUET17KCEO	586248 PUET17KGEO	586249 PUET17KVE0
External dim. - mm						
width	1600	1600	1600	1600	1600	1600
depth	900	900	900	900	900	900
height without plinth	700	800	400	700	800	400
overall height (lid open)	1791	1791	1791	1791	1791	1791
overall depth	950	950	950	950	950	950
Well capacity - lt	170	170	170	170	170	170
Well depth - mm	326	326	326	326	326	326
Electric Power - kW	20.6	20.6	20.6	20.6	20.6	20.6
Electrical connection	400V 3N 50/60Hz	400V 3N 50/60Hz	400V 3N 50/60Hz	400V 3N 50/60Hz	400V 3N 50/60Hz	400V 3N 50/60Hz
Core temperature sensor				•	•	•
Hygienic plinth	•			•		
Wall mounted			•			•
GN conformity	•	•	•	•	•	•

Gas Pressure Braising Pans - 90 lt - 900 mm Depth



	586250 PUET09GCCO	586251 PUET09GGCO	586252 PUET09GVCO	586253 PUET09LCCO	586254 PUET09LGCO	586255 PUET09LVCO
External dim. - mm						
width	1200	1200	1200	1200	1200	1200
depth	900	900	900	900	900	900
height without plinth	700	800	400	700	800	400
overall height (lid open)	1789	1789	1789	1789	1789	1789
overall depth	1077	1077	1077	1077	1077	1077
Well capacity - lt	90	90	90	90	90	90
Well depth - mm	298	298	298	298	298	298
Gas Power - kW	18	18	18	18	18	18
Electric Power - kW	0.25	0.25	0.25	0.25	0.25	0.25
Electrical connection	230V 1N 50/60Hz	230V 1N 50/60Hz	230V 1N 50/60Hz	230V 1N 50/60Hz	230V 1N 50/60Hz	230V 1N 50/60Hz
Core temperature sensor				•	•	•
Hygienic plinth	•			•		
Wall mounted			•			•
GN conformity	•	•	•	•	•	•

Gas Pressure Braising Pans - 170 lt - 900 mm Depth



	586256 PUET17GCCO	586257 PUET17GGCO	586258 PUET17GVCO	586259 PUET17LVCO	586260 PUET17LCCO	586261 PUET17LGCO
External dim. - mm						
width	1600	1600	1600	1600	1600	1600
depth	900	900	900	900	900	900
height without plinth	700	800	400	700	800	400
overall height (lid open)	1789	1789	1789	1789	1789	1789
overall depth	1077	1077	1077	1077	1077	1077
Well capacity - lt	170	170	170	170	170	170
Well depth - mm	326	326	326	326	326	326
Gas Power - kW	29	29	29	29	29	29
Electric Power - kW	0.25	0.25	0.25	0.25	0.25	0.25
Electrical connection	230V 1N 50/60Hz	230V 1N 50/60Hz	230V 1N 50/60Hz	230V 1N 50/60Hz	230V 1N 50/60Hz	230V 1N 50/60Hz
Core temperature sensor				•	•	•
Hygienic plinth	•				•	
Wall mounted			•	•		
GN conformity	•	•	•	•	•	•

www.electrolux.com/foodservice

Share more of our thinking at www.electrolux.com

The Company reserves the right to change specifications without notice. Pictures are not contractual.

9JEFPU