

Dishwashing solutions

- Glasswashers
- Undercounter dishwashers
- Hood type dishwashers
- Rack type dishwashers



Thinking of you
Electrolux

Four options for your warewashing needs

Glasswasher, Undercounter dishwasher, Hood type dishwasher, Rack type dishwasher are the ideal solutions for demanding customers who require high performance with low running costs.





Glasswasher



Undercounter dishwasher



Hood type dishwasher



Rack type dishwasher



Glasswashers

Compact and versatile
for small spaces with large loads

■ Speed and Performance.

The 120 second cycle guarantees 30 racks per hour!

■ The “**Soft Start**” feature prevents accidental damage to glassware by reducing the power of the water jets at the beginning of the cycle.

■ Maximum **performance** and **durability** are obtained thanks to the **wash and rinse arms**, constructed entirely in **stainless steel**.

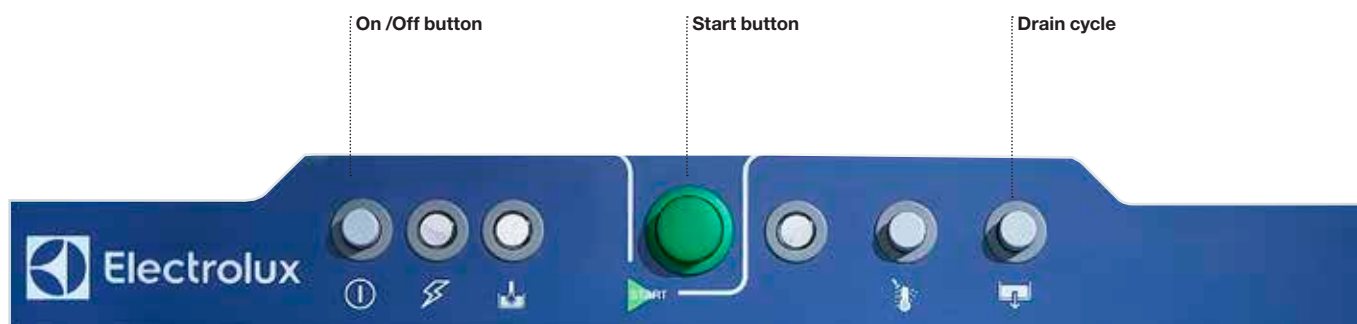
■ The **high opening** (290 mm) allows more **flexibility**: all types of glassware can be washed (up to 270 mm).

■ **Easy** to set cycle times-one cycle does it all. The control panel enables the operator to start the cycle by **simply pushing a button!**

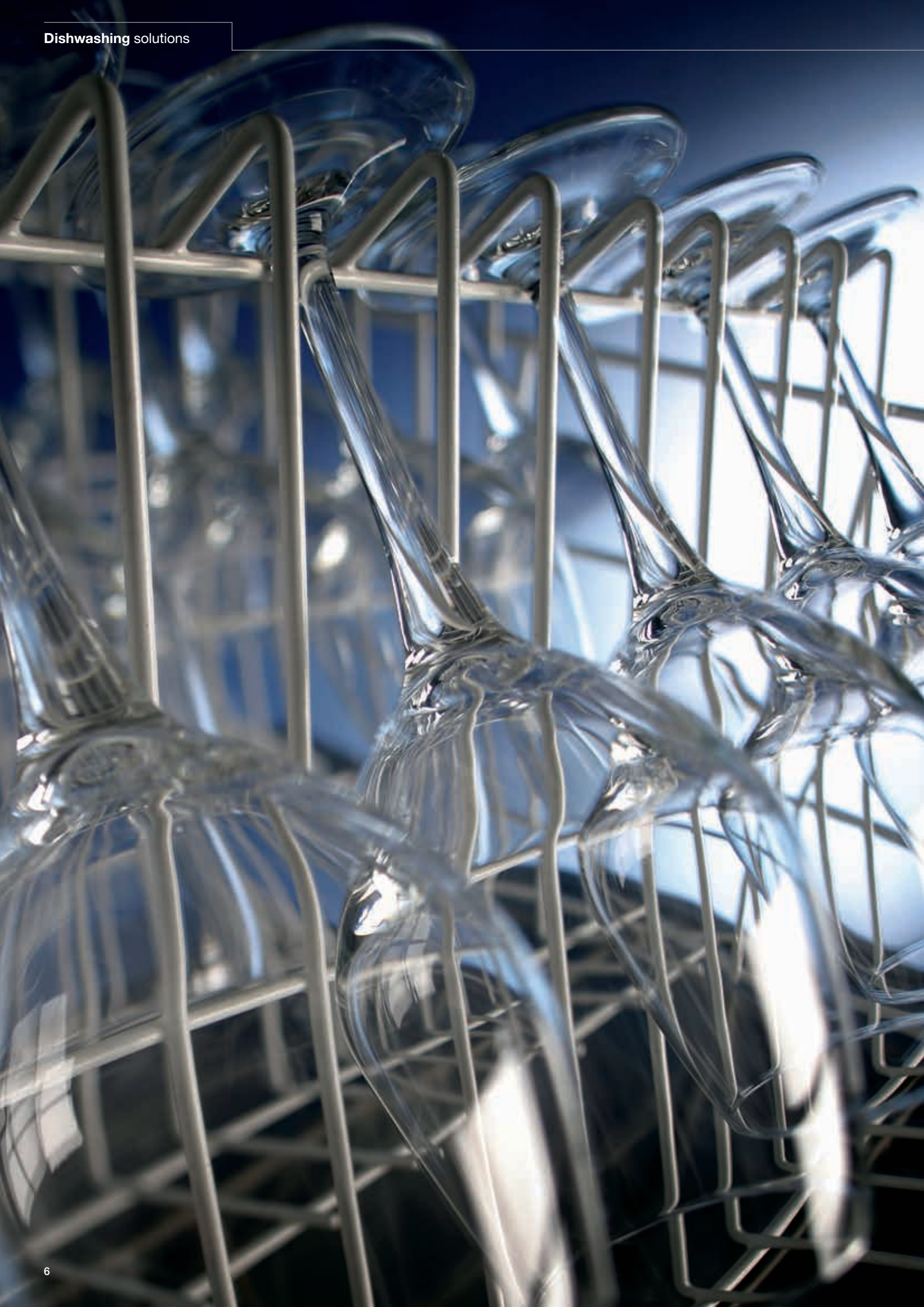
■ The machine is completely sealed to guarantee **IPX4 water protection**.

■ The **double skin** construction ensures **silent operation** and **less heat emission**.

■ The **pressed well** has rounded corners for **easier cleaning**.



Glasswasher	402116
Model	EGWSIG
External dimensions (mm) (wxdxh)	460x565x715
Basket dimension (mm)	400x400
Clearance (mm)	290
Electrical connection	230V / 1N / 50Hz
Capacity (basket/hour)	30
Cycle time (sec)	120
Washing & rinsing temperature (°C)	55-65 / 80-90
Water consumption (l/cycle)	2.3 (hot)
Total power (kW)	2.3
Built-in drain pump	•
Built-in detergent dispenser	•
Built-in rinse aid dispenser	•
Included basket	1 basket for glasses



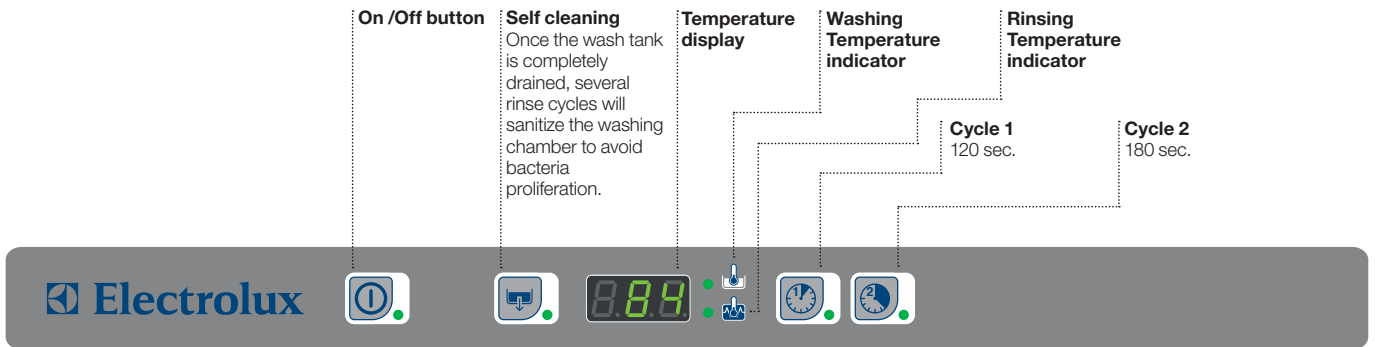
Undercounter dishwashers

The ideal solution for demanding customers requiring high performance with low running costs

- Electrolux undercounter dishwashers can wash up to **30 racks per hour**.
- The **“Soft start”** feature prevents accidental damage to glassware and crockery by reducing the power of the jets of water at the start of the wash cycle.
- The fully automatic **self-cleaning** cycle sanitizes the washing chamber with hot water.

- All models are **certified IPX4 for water**.
- The boiler, being made of A304L, is resistant to chlorinated water and is welded in an inert atmosphere to avoid contamination during the production process.
- **Silicon coated** user interface is protected by a plastic box to avoid water splashes.
- The **external electric box** allows rapid on-site changing

- from single to three phase connections and viceversa.
- All models are pre-arranged to accept external dosing equipment to avoid a service engineer from damaging the machine during installation.
- User friendly electronic control allows easy customization of washing and rinsing temperature as well as cycle time to meet specific customer requirements.



Undercounter dishwasher	400146
Model	NUC3DP
External dimensions (mm) (wxdxh)	600x610x820
Basket dimension (mm)	500x500
Clearance (mm)	290
Electrical connection	400V / 3N / 50Hz, convertible on site to 230V / 1N or 230 / 3 / 50Hz
Capacity (basket/hour)	30
No. of cycles	2
Wash temperature (°C)	55-65
Rinse temperature (°C)	80-90
Water consumption (lt./cycle)	3.3
Total power (kW)	5.35
Drain pump	•
Included baskets	1 basket for 18 plates 1 cutlery container

Always with something extra

■ Enjoy the **yearly savings in water, energy, detergent and rinse aid** and guarantee **best-in-class performance**.

- **Water savings:** only **2lt/cycle** of fresh water are needed for rinsing regardless of water inlet conditions.
- **Energy savings: up to 60%** with **34% savings in chemicals** thanks to the low rinse water consumption and optimized wash tank size.

■ **Powerful washing circuit** guarantees **best-in-class washing results** regardless of where the items are placed, thanks to the unique shape of the spray nozzles and the upper and lower rotating arms.

■ **Wash-Safe Control Atmospheric boiler-High quality rinsing** is always achieved regardless of the inlet water conditions. Ensures constant high temperature and strong pressure of water during the rinse phase.

■ **The slanted wash arms**** and the 4-second pause after washing and before rinsing ensures the wash water no longer drops on the clean dishes during the rinse cycle.

■ **Perfect sanitation**
The most dangerous groups of bacteria find their ideal condition for growth in an environment with a temperature between 20° and 60 °C (max 70 °C). The green&clean hood type guarantees a constant rinsing temperature of **84 °C** assuring

perfect hygienic conditions and **total detergent removal** fulfilling **best-in-class safety requirements**.

■ **The WASH•SAFE CONTROL** light turns green to guarantee rinsing has been performed perfectly with a constant temperature over **84 °C**.

■ **Zero Lime Device** (optional accessory)

■ Less energy consumption thanks to higher efficiency of heating elements. Lime-free nozzles for better rinsing results.

■ Electrolux Hood type dishwashers received ETL Sanitation Approval and comply with NSF sanitation standards (NSF/ANSI 3 Paragraph 7.1) when used in ETL.S mode. In high productivity mode, complies with DIN 10512 standards.

■ High clearance of 440 mm facilitates washing of large items. Choose from a wide range of accessories to complement your dishwashing area.

■ Maximum visibility thanks to the innovative angular position of the control panel.

■ Self cleaning feature, when activated, completely drains the water from the wash tank and the wash pump, performs 6 rinse cycles to sanitize the washing chamber and when completed, the water from rinsing is drained completely to avoid bacteria proliferation.



Hood type dishwashers

■ **Reduce labor costs and better organize work hours** with “High Productivity Mode”. Wash up to 80 baskets or 1440 dishes per hour.

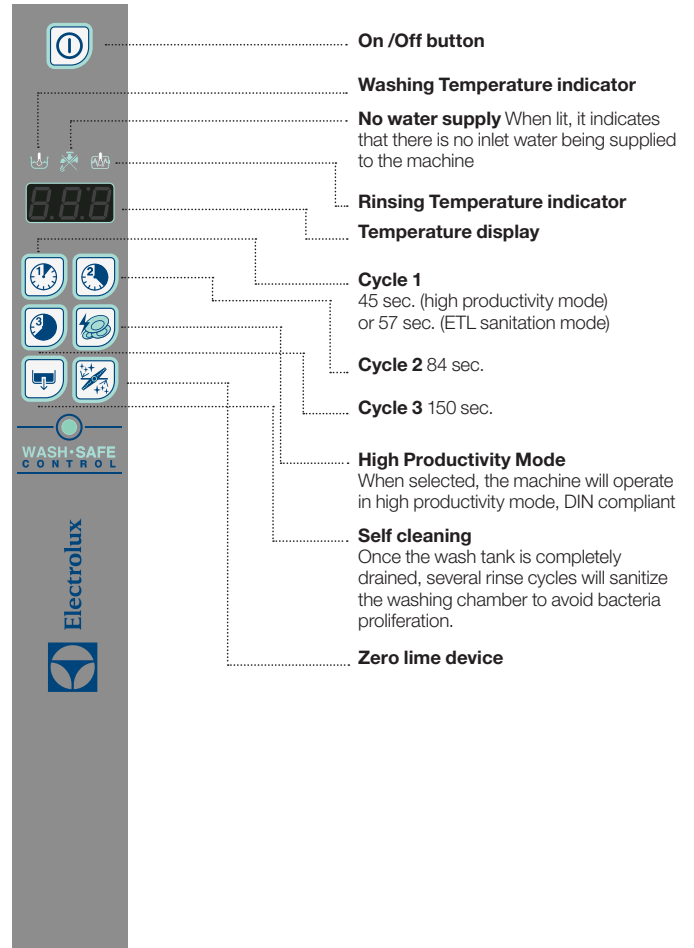
■ **No more damage to glassware** and crockery with the “Soft Start” feature which reduces the water power on the items at the start of the wash cycle.

■ **Long-lasting operation.** All components in contact with water and chemicals are made of 304 AISI stainless steel.

■ **Eliminate corrosion.** Boiler highly resistant to chlorinated water thanks to the unique robotized TIG welding technology.

■ **Pressed tank** in front of machine makes cleaning operations faster and easier

■ **IP25 protection** Full protection against water jets and solid objects/animals (larger than 6mm)



Hood Type Dishwasher	505073	505075
Model	EHT8ROW	EHT8ROW6
WASH•SAFE CONTROL	•	•
Sanitation guaranteed	•	•
Electrical connection	400V / 3N / 50Hz convertible on site to 230V / 1Nz	230V / 3 / 60Hz convertible on site to 230V / 1N or 400 / 3N / 60Hz
Number of cycles	3	3
Capacity (High Productivity mode)	80 racks/hour 1440 dishes/hour	80 racks/hour 1440 dishes/hour
Capacity (ETL Sanitation mode)	63 racks/hour 1134 dishes/hour	63 racks/hour 1134 dishes/hour
External dimensions (mm) (wxdxh)	752x755x1547	752x755x1547
Basket dimension (mm)	500x500	500x500
Wash tank capacity (lt.)	24	24
Wash pump power (kW)	0,8	0,8
Boiler power (kW)**	9	9
Water consumption (lt./cycle)	2	2
Total power (kW)	9,9	9,9
Noise level (dBA)	< 68	< 68
Built-in rinse aid dispenser	•	•
Included baskets	1 basket for 18 plates 1 cutlery container	1 basket for 18 plates 1 cutlery container



Rack type dishwashers

■ High capacity of 200 racks per hour.

■ It offers long lasting **reliability** thanks to the robust materials used. All main elements are in stainless steel including bearing structure, door, feet, internal and external panels, washing arms, rinsing arms, nozzles and tank filters.

■ Top-level hygiene is assured by rinsing and washing circuits that are completely separated and by the curtain which physically separates the washing and rinsing zones.

■ The large inspection door allows easy access both to the

washing and the rinsing areas to simplify daily cleaning operations.

■ External **cleanability** is facilitated by the smooth external surface, the 200 mm feet height and the IPX5 protection.

■ The Electrolux rack type dishwasher makes life

in the kitchen a little easier thanks to the double skin door with internal insulation to obtain noise reduction and less heat dispersion in the working environment.

■ Hot Air Blower available on demand.

(Width 600mm - Power 8,5kW)

Rack Type Dishwasher	533370	533371	533374	533375	533376	533377	533336	533337
Model	NERT20ERH	NERT20ELH	NERT20ER	NERT20EL	NERT20ER60	NERT20EL60	NERT20SR	NERT20SL
Energy	Electric	Electric	Electric	Electric	Electric	Electric	Steam	Steam
Compliant with thermal label test	•	•					•	•
Productivity Racks/hour Plates/hour	200 3600	200 3600	200 3600	200 3600	200 3600	200 3600	200 3600	200 3600
Dimensions Width (mm) Depth (mm) Height (mm) Height w/door open	1550 824 1454 2050	1550 824 1454 2050	1550 824 1454 2050	1550 824 1454 2050	1550 824 1454 2050	1550 824 1454 2050	1550 800 1454 2050	1550 800 1454 2050
Direction	Right > Left	Left > Right	Right > Left	Left > Right	Right > Left	Left > Right	Right > Left	Left > Right
Electrical connection	400V 3N 50Hz	400V 3N 50Hz	400V 3N 50Hz	400V 3N 50Hz	400V 3N 60Hz	400V 3N 60Hz	400V 3N 50Hz	400V 3N 50Hz
Wash Temperature (°C) Tank capacity (lt.) Pump power (kW)	55-65 114 1.5	55-65 114 1.5	55-65 114 1.5	55-65 114 1.5	55-65 114 1.5	55-65 114 1.5	55-65 114 01:05	55-65 114 01:05
Rinse Temperature(°C) Water consumption (lt./hour)	80-90 480	80-90 480	80-90 480	80-90 480	80-90 480	80-90 480	80-90 480	80-90 480
Total power (kW)	50	50	39	39	39	39	2.1	2.1
Steam consumption (kg/h)							60	60



 www.electrolux.com/professional

Share more of our thinking at www.electrolux.com

Excellence with the environment in mind

Electrolux Professional solutions perfectly match the customers' needs, including the areas of reliability, cost efficiency and sustainability. The products are the best in terms of quality - durability with low running costs. Some installations have been running for more than 40 years!

- All Electrolux Professional factories are ISO 14001-certified
- All Electrolux Professional solutions are designed for low water, energy and detergent consumption, and for low emissions into the environment
- All Electrolux Professional solutions are the best-in-class in terms of quality, for a long life cycle with the lowest life cycle costs. There are solutions still running after 40 years
- All Electrolux Professional solutions are ROHS and REACH compliant and over 95% recyclable
- All Electrolux Professional solutions are 100% quality tested and all of the functions are singularly checked by expert technicians
- In the last five years, more than 70% of Electrolux Professional solutions have been updated with features that are always designed with the needs of customers and environmental considerations in mind
- Electrolux Professional sustains a specific energy saving program to reduce the energy consumption of its production plants

