

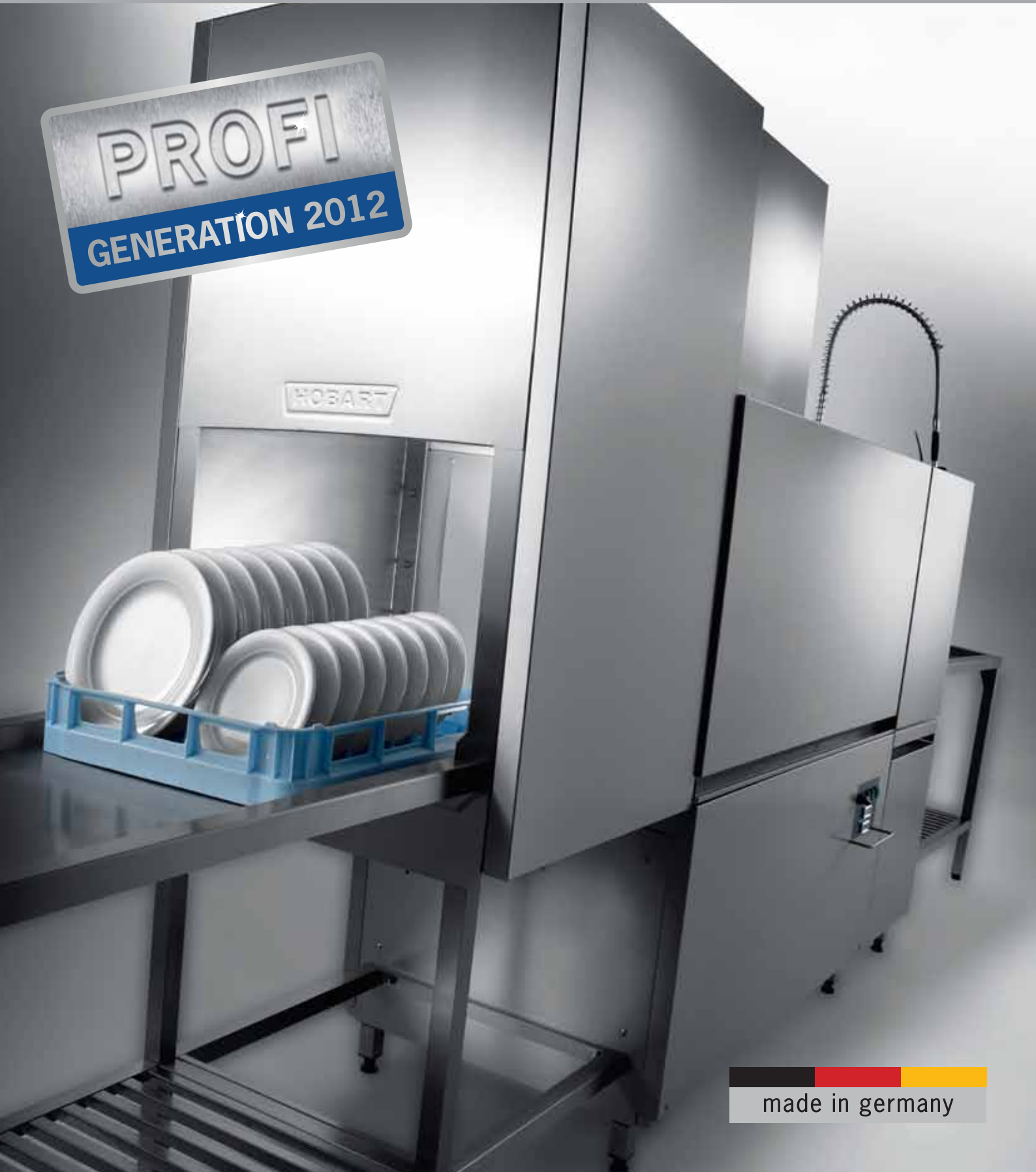


WAREWASHING
RACK-TYPE DISHWASHER

PROFI CS

EFFICIENT - RELIABLE - INNOVATIVE

PROFI
GENERATION 2012




made in germany

MADE IN GERMANY

„Made in Germany“ has been synonymous with quality and reliability in the premium segment for a long time and still is today. A company can only maintain its hold on the market by keeping its promise to continually deliver high quality.

WORLDWIDE

Whether you need a completely new kitchen or a replacement item our competent subsidiaries and partners all over the world would be pleased to support you. It's nice to know we are always there.



1883 Mr. Charles Clarence Hobart builds his first engines and generators in Middletown, Ohio.

1886 J.C. Cochran receives the patent for the first dishwasher.

1897 The HOBART ELECTRICAL MANUFACTURING COMPANY was founded in Troy Ohio, through the acquisition of the engine and generator factory of the HOBART family.

1903 HOBART builds the first food processor (a self-contained powered coffee mill).

1926 HOBART purchases The Crescent Washing Machine Company, and enters the commercial warewashing market: the first warewashing machine carrying a HOBART label.

1930 Foundation of the HOBART MASCHINEN GESELLSCHAFT in Hamburg, Germany.

1953 HOBART receives the patent for the first flight-type dishwasher.

1960 Acquisition of the dishwashing department of the company K. Martin, Offenburg, Germany.

1980 Production plant in Elgersweier, Germany, was newly built.

1986 PREMARK INTERNATIONAL GROUP was formed in Deerfield, Illinois.

1997 HOBART CORPORATION'S 100th anniversary.

1999 Integration of PREMARK into ITW.

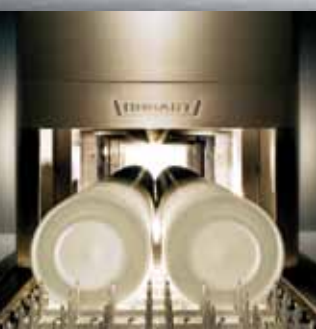
2004 HOBART relocates to Elgersweier

2006 Launch of HOBART's export activities

2007 HOBART's PREMAX line begins a new chapter in the annals of dishwashing technology. The PREMAX FTP flight-type dishwasher cuts water use by up to 50%, energy use by up to 30%, and use of chemicals by up to 80%.

2009 HOBART introduces the SENSOTRONIC, the world's first intelligent dishwashing technology

2010 Tenth record year in succession for HOBART





THE COMPANY

Based in Offenburg, Germany, HOBART leads the world market in industrial warewashing technology. We serve customers such as hotels, restaurants and caterer, bakeries and butcheries as well as supermarkets, airlines and cruise ships across the world.

HOBART develops, produces and sells warewash, cooking, food preparation and waste treatment appliances and systems, and employs around 6,865 staff members across the world, 903 of them in Germany. HOBART is a subsidiary of the US Illinois Tool Works (ITW) Group, which manufactures and sells a variety of products; the group has a staff of 65,000 employees in 875 autonomous companies in 49 countries.

OUR VISION

WASH WITHOUT WATER

Our intensive market research has shown unequivocally that our customers require appliances that are economical and ecological while still producing first-class results. We have addressed this demand and worked out our vision, *Wash Without Water*. The resulting areas of focus – innovation, economy, ecology – set the direction. Our vision means leaving no stone unturned when it comes to reducing water, energy and detergent consumption.

UTOPIAN?

Everything begins with a vision. Many of the products that make everyday life easier today began as the ideas of a visionary; many of these ideas would have seemed utopian at the time. There can be no progress without a vision – and that applies to warewashing as much as anything else. Before the introduction of PREMAX, a dishwasher with a 50% water saving technology would have been utopia. Today, PREMAX has set new standards, and we by now know that whenever the dishwasher that washes without water will come, it'll be a PREMAX.



FOCUS

INNOVATION

Innovation means more than just turning an idea into reality. We at HOBART see innovation as a continuous process. In fact, we've put more than 30 innovative products onto the market since the PREMAX launch. All these innovations share one single goal – to generate real value added for our customers.

We have a global network of more than 300 research and development engineers to make this possible, plus marketing teams out on every continent to identify customer preferences and requirements. We have a group technology centre in the US with more than a 1,000 patent applications a year, together with an innovation centre for warewashing in Offenburg, Germany.

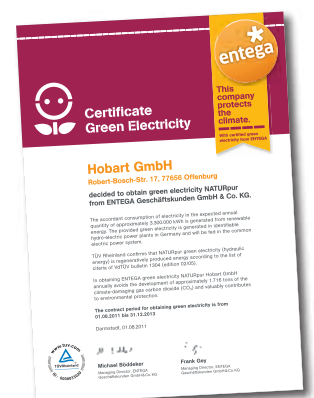
ECONOMY

Already in the early 1980s our energy-formula set benchmarks in energy saving and recovery which are still unique today. This innovative spirit found its fulfillment in the PREMAX line. The PREMAX flight-type dishwasher saves up to 50% water, 30% energy, and 80% chemicals in comparison to conventional technologies, making HOBART a pioneer in terms of efficiency and economy.

ECOLOGY

The HOBART environmental protection program CO₂NSEQUENT has been in existence for some time.

The program includes a large number of measures that are all related to protecting the environment. These measures are implemented in production, purchasing, the development and sale of products and in additional projects. As an example, you might like to know that all HOBART products are manufactured using regenerative energy only.



1

2

3

4

1 „For us, automated processes guarantee satisfied customers. And the same goes for our warewashing area. The PROFI CS fulfils our requirements ideally, and its simple operation expedites the entire handling process.”

2 „Our previous hood-type dishwasher often slowed us down in peak times, having reached its capacity limit. The PROFI CSA has an appreciably higher capacity, despite its lower space requirements. Since it has been in use in our kitchen, everything has been running smoothly.”

3 „We employ many part-time staff in our dishwashing area. Because the PROFI CS is so easy to operate, this is possible without long training. The machine is as reliable as a Swiss watch.”

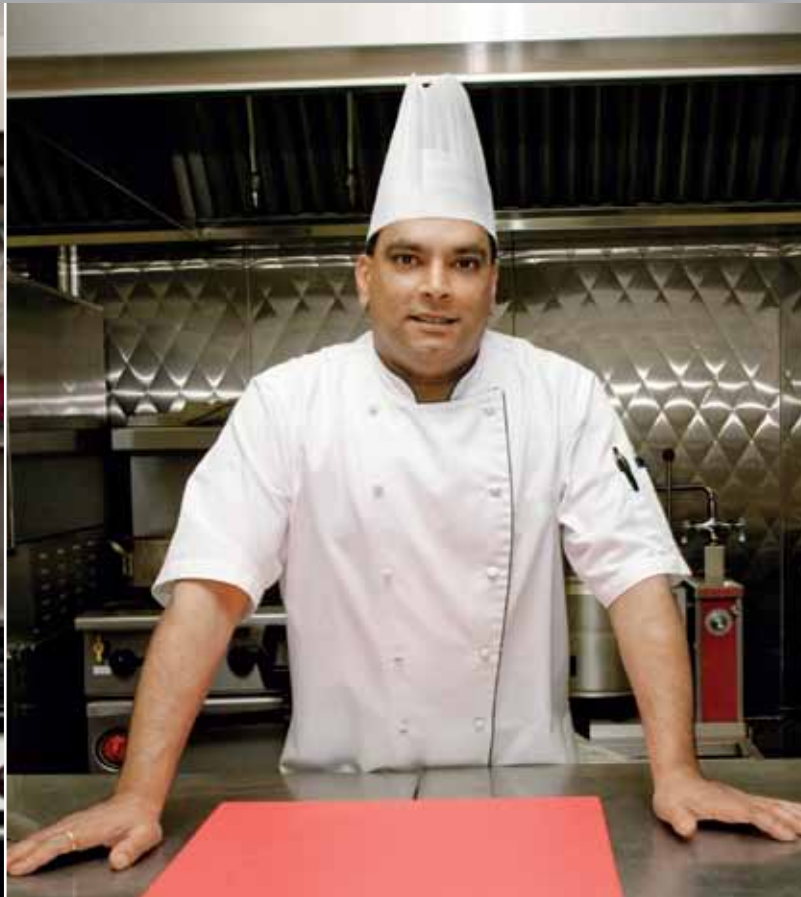
4 „We have realised our dream of running our own restaurant. We are aware of the risks. We wanted a reliable, inexpensive dishwashing solution and we found exactly what we were looking for in the PROFI CS.”

Lorenzo Remolino
Hospital,
Pisa, Italy

Metin Kilit
Caterer,
Ankara, Turkey

Lucas Hanson
Hotel-Restaurant,
Kristianstad, Sweden

Medea and Ilias Idis
Restaurant,
Kavála, Greece



1 | WASH RESULT

POWERFUL WASHING

The combination of four upper and three lower wash arms leads to perfect results.

THOROUGH DUAL RINSE

A second rinsing zone is integrated prior to the actual final rinse. Here, the fresh water collected in the receiving pan is used a second time in an additional pre-rinse. The optional dual rinse ensures a sparkling wash every time.

WIDE ANGLE NOZZLE FAN

Wash efficiency depends largely on the distribution of the wash water and on avoiding any masked areas. Spraying angles and the precision of the wash jets are vital factors in achieving a powerful, searching wash action and the HOBART designed wide angle nozzles FAN provide a substantially wider and more precise spray pattern. Compared with

conventional and fixed wash arm systems the wash water is distributed more efficiently, masking is avoided and the wash result, especially in the corners, is considerably improved.

NON-CLOGGING NOZZLES

The indented nozzles cannot be obstructed, resulting in a constantly powerful wash and perfect quality results.

PRACTICAL DRYER

A perfect wash means not only sparkling clean, but also dry tableware. The optional dryer fulfils these requirements quickly and precisely, allowing rapid reuse of all washed items.

SPARKLING – CLEAN



Best wash result due to 4 wash arms above and 3 wash arms below.



The nozzle geometry of the wide angle nozzle FAN was calculated in numerous simulations.

DRY – HOT

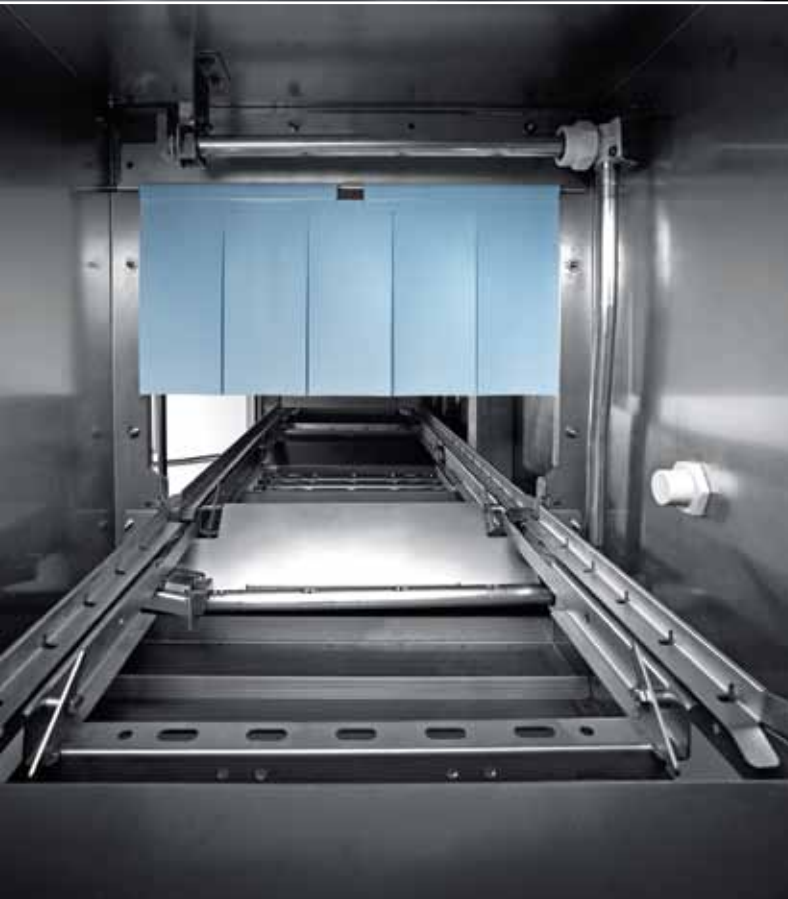


Fresh water is collected in the receiving pan and reused for an additional pre-rinse.



The curtains are marked distinctively.

HOBART



2 | HANDLING

CLEAR OPERATING PANEL

Turn on and start at the touch of a button. All other important functions are performed by the controller. A temperature display can be included if required.

DROP-IN WASH SYSTEM

Easy to take out and insert.

BAYONET WASH ARM CATCH

Wash arms can easily be opened and closed to simplify cleaning.

CODED WASH AND RINSE ARMS

The wash and rinse arms are clearly designed to prevent risk of confusion when inserting.

CODED CURTAINS

Easy to take out and insert. The clear marking on the wash curtains prevents confusion when inserting.

3 | ECONOMY

PATENT

ENERGY-MANAGEMENT EFFICIENT

A conventional rack-type dishwasher loses 40% of the energy available in the machine via the exhaust system. The distribution of water and the air stream have a considerable influence. The new energy-management EFFICIENT reduces the evaporation loss. The improved arrangement of the wide angle nozzles FAN and the orientation of the wash arms reduce the air flow within the machine. The patented wide angle nozzle FAN spreads out a 65% wider and more even spray pattern. Therefore the recirculation of water can be reduced for the same wash result. In order to keep the system in balance less air/water steam has to be exhausted. The new energy-management reduces the energy loss of the rack-type dishwasher by up to 15%. Heat recovery aims towards minimising primary energy requirement and consumption. Heat recovery units use the remaining heat from exhaust air.

OBVIOUS – SIMPLE



The clearly laid-out controls make for easy operation.

ECONOMICAL – EFFICIENT



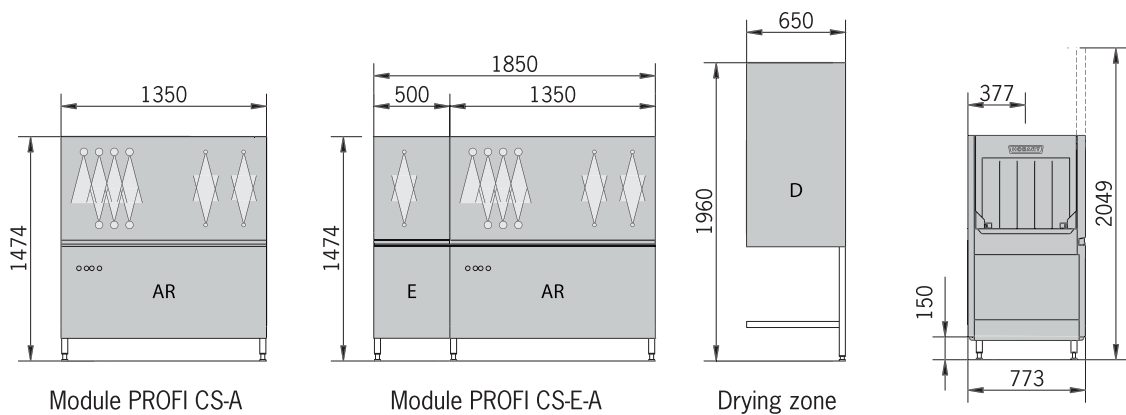
Up to 65% wider and more even spray pattern.

4 | TECHNICAL DATA

Model	Capacity (racks / h)	Rinse System	Water consumption		Total connected load (kW)			Total length (in mm without drying zone)
			(l / h)	(l / rack)	with hot water supply (min. 50°C)	with cold water supply (min. 10°C) and heat recovery system C20	with cold water supply (min. 10°C)	
CS-A	150	Mono	260	1.73	27.2	30.2	36.2	1,350
CS-A	100 / 150	Dual	230	1.53	27.2	30.2	36.2	1,350
CS-A	150 / 220	Dual	260	1.18	30.2	33.2	39.2	1,350
CSE-A	150	Mono	260	1.73	27.4	30.4	36.4	1,850
CSE-A	100 / 150	Dual	240	1.60	27.4	30.4	39.4	1,850
CSE-A	150 / 220	Dual	260	1.18	30.4	33.4	39.4	1,850

Note: Add 3.6 kW and 650 mm when Dryer (CDS) is ordered to all models.

5 | MODULE SELECTION



Loading height: 440 mm
Loading width: 510 mm

WAREWASHING
RACK-TYPE DISHWASHER

PROFI CS

EFFICIENT – RELIABLE – INNOVATIVE

SIMPLE – STRONG – RELIABLE

The PROFI CS is HOBART's smallest rack-type dishwasher and stands for top quality and absolute reliability.

If the capacity of a hood-type dishwasher is not sufficient to meet your needs, the PROFI CS is the perfect solution.

By using the optional heat recovery, you can save up to 7 kWh in energy.



HOBART GMBH

Robert-Bosch-Straße 17
77656 Offenburg/GERMANY
Tel +49(0)781.600-28 20
Fax +49(0)781.600-28 19

Hobart International (S) Pte Ltd

84, Genting Lane, #07-01
Cityneon Design Centre
Singapore 349584
Tel +65 6846 7117
Fax +65 6846 0991

e-mail: enquiry@hobart.com.sg
www.hobart.com.sg

EFFICIENT – RELIABLE – INNOVATIVE

